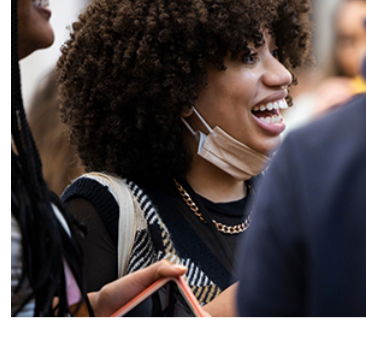




CLASS OF '26

# INCOMING STUDENT,

## It's about time to soak up the summer!



Whether you are finding innovative ways to stay busy or plan to take it easy at home, we hope you are prepared to seize the long days of summer!

We've put together another Eagle Update for you that's loaded with important deadlines and critical information, so read every word and share it with your family!

### Did You Know?

The Department for Accessibility Services (DAS) provides accommodations for students with diagnosed disabilities. Students are responsible for initiating the accommodation request process by self-disclosing their disability directly to the DAS office.

If you are interested in learning more about the Oxford College DAS office and its available resources, please visit the [department's website](#). If you have any questions, please feel free to email DAS at [accessibility@emory.edu](mailto:accessibility@emory.edu) with "Oxford Student" in the subject line.



[VIEW PREVIOUS EAGLE UPDATES](#)

### What's Next?

- **Discovery Seminar:** Every first-year student will enroll in a Discovery Seminar (DSC 101Q) course as the first step in Oxford's signature general education curriculum focused on Discovery, Exploration, and Reflection. Now is the time to start thinking about your Discovery Seminar for the fall!

The 3-credit Discovery Seminars are offered on a wide range of course topics and allow you to engage in inquiry-based learning with a faculty mentor, who will also serve as your academic adviser, and a small group of other first-year students. See descriptions of the 27 Discovery Seminars and submit your preferences [here](#). Be sure to submit your preference form to rank your top choices of Discovery Seminars by July 15. Students who do not submit their preferences by the July 15 deadline will be randomly assigned to a DSC 101Q course with open seats.

- **Required Health Forms and Health Insurance Waiver:** The required online Health Insurance Waiver is accessible through your [OPUS account](#). Please remember that the deadline to complete your required health forms is July 1. You must complete and upload the documents per instructions on your [Oxford Campus Patient Portal](#) by the deadline.

For more information, please visit the [Student Health Services page](#) of the Welcome Website.

- **Placement Testing:** Oxford College requires entering first-year students to complete placement exams for specific courses. These include First-Year Writing, Foreign Languages, Mathematics, and Chemistry. We want to make sure our students enroll in the right level of instruction to ensure their first year on campus is as successful as possible. The priority deadline for ALL placement exams is August 1. If you intend to enroll in a course that requires placement for Fall 2022, please complete by this deadline.

Visit the [Placement Testing page](#) of the Welcome Website for more information about these exams, their locations, and how to access them. If you have questions, you can email the Advising Support Center at [oxadvising@emory.edu](mailto:oxadvising@emory.edu).

- **F1 Visas:** Will you be studying at Oxford with an F1 international student visa? If so, you will need to pay the SEVIS I-901 fee before you can apply for an F1 visa. Learn more about paying the fee on the [U.S. Immigration and Customs Enforcement website](#). Be sure to attach a copy of the receipt of payment to your I-20 so that you can show proof of payment when you enter the U.S. port of entry.

- **International Student Welcome:** Students who plan to attend ISW should complete the online [2022 International Student Welcome Registration Form](#) by Friday, July 1.

You should also complete the [2022 International Student Welcome Airport Pick-Up Service Form](#) by Friday, July 29 if you plan to use the airport pick-up service to get to Oxford College.

Move-in day for students attending ISW is Saturday, August 13. Questions? Contact International Student Programs at [OxISP@emory.edu](mailto:OxISP@emory.edu).

- **Move-in & Orientation:** Move-in day will take place at Oxford on Friday, August 19, and the New Student Orientation program will begin after move-in and continue through August 23.

A detailed schedule for students will be provided later in the summer as gathering plans and guidelines are finalized. We anticipate being able to welcome parents and families to campus for move-in, with limitations on the number of guests who can enter the residential buildings or other campus facilities. New students and families will be provided additional details and protocols regarding Move-in and Orientation Week throughout the summer.

- **Ignite Leadership:** Ignite Leadership is a pre-orientation program hosted by Oxford College and Emory College, August 15-18. Through both large and small group presentations and activities, incoming first-year students will learn more about what it means to participate in the process of leadership as Emory students.



Additionally, participants have the opportunity to build a sense of community and engage with faculty, staff, and student leaders before New Student Orientation begins on August 19. All participants are placed into small cohorts led by student mentors. Through different events, activities, and cohort meetings, participants explore ways to engage in involvement and leadership opportunities at Emory.

Click [here](#) for more information about Ignite Leadership and to register. Contact Veronica Roman at [veronica.roman@emory.edu](mailto:veronica.roman@emory.edu) with any questions.

- **Emory Essentials:** Students will be invited to join the Emory Essentials: Oxford Edition Canvas course on June 1. Please be sure to check your Emory email and accept this invitation. The course includes the modules that students will be required to review and complete throughout the summer. These modules include information about Academics, Placement Testing, General Education Requirements, Course Registration, Campus Life, and more!

**We are excited to welcome you to the Class of 2026!**

**Should you need any assistance this summer, please refer to the Welcome Website for departmental contact information.**

[WELCOME WEBSITE](#)

[FOLLOW US](#)



EMORY

Oxford College Office of Enrollment Services  
122 Few Circle, Oxford, GA 30054-1418

800.723.8328 770.784.835

9

[oxadmission@emory.edu](mailto:oxadmission@emory.edu)

[Contact Us](#) [Apply](#) [Visit](#) [Virtual Tour](#)

